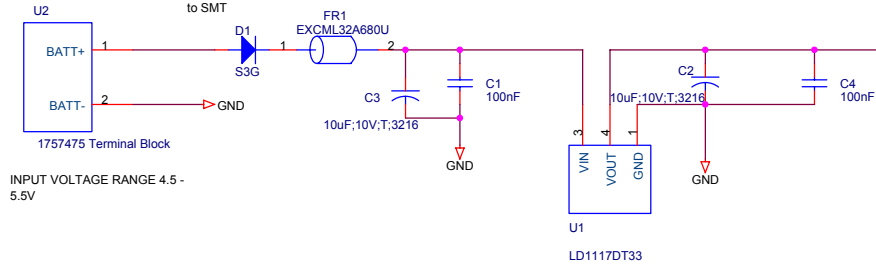


+5 V Supply

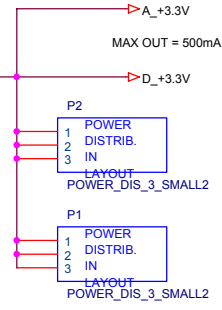
Switched from through-hole 1N5404 to SMT



INPUT VOLTAGE RANGE 4.5 - 5.5V

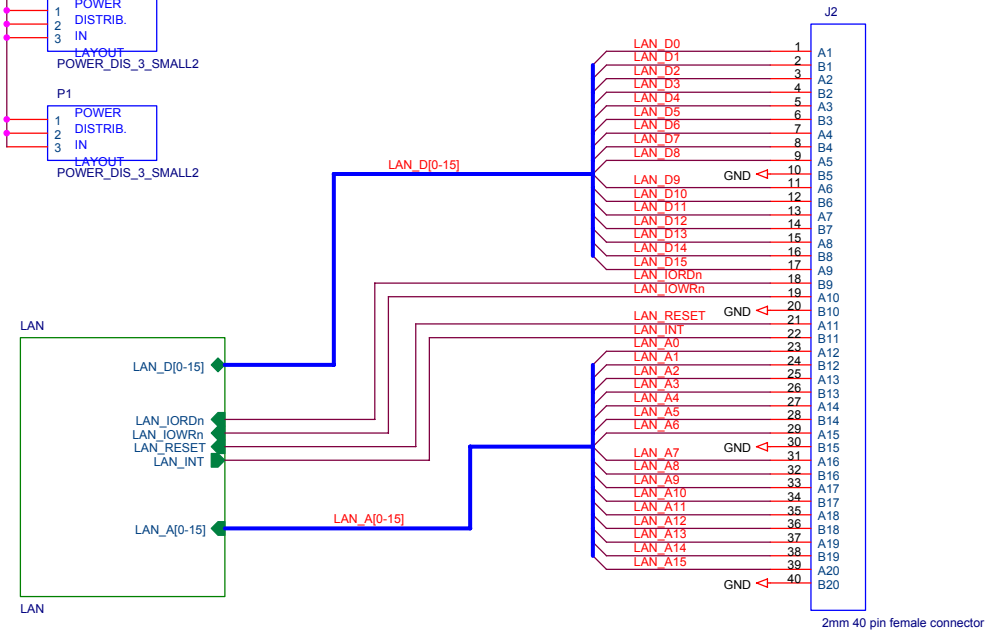
COM-5002 versus COM-5001 comparison:

- same form factor, same functionality
- 10/100baseTx
- better undervoltage/overvoltage protection
- less sensitive to undervoltage condition
- higher throughput using TCP-IP offline engine (TOE) implemented in FPGA
- one less firmware type

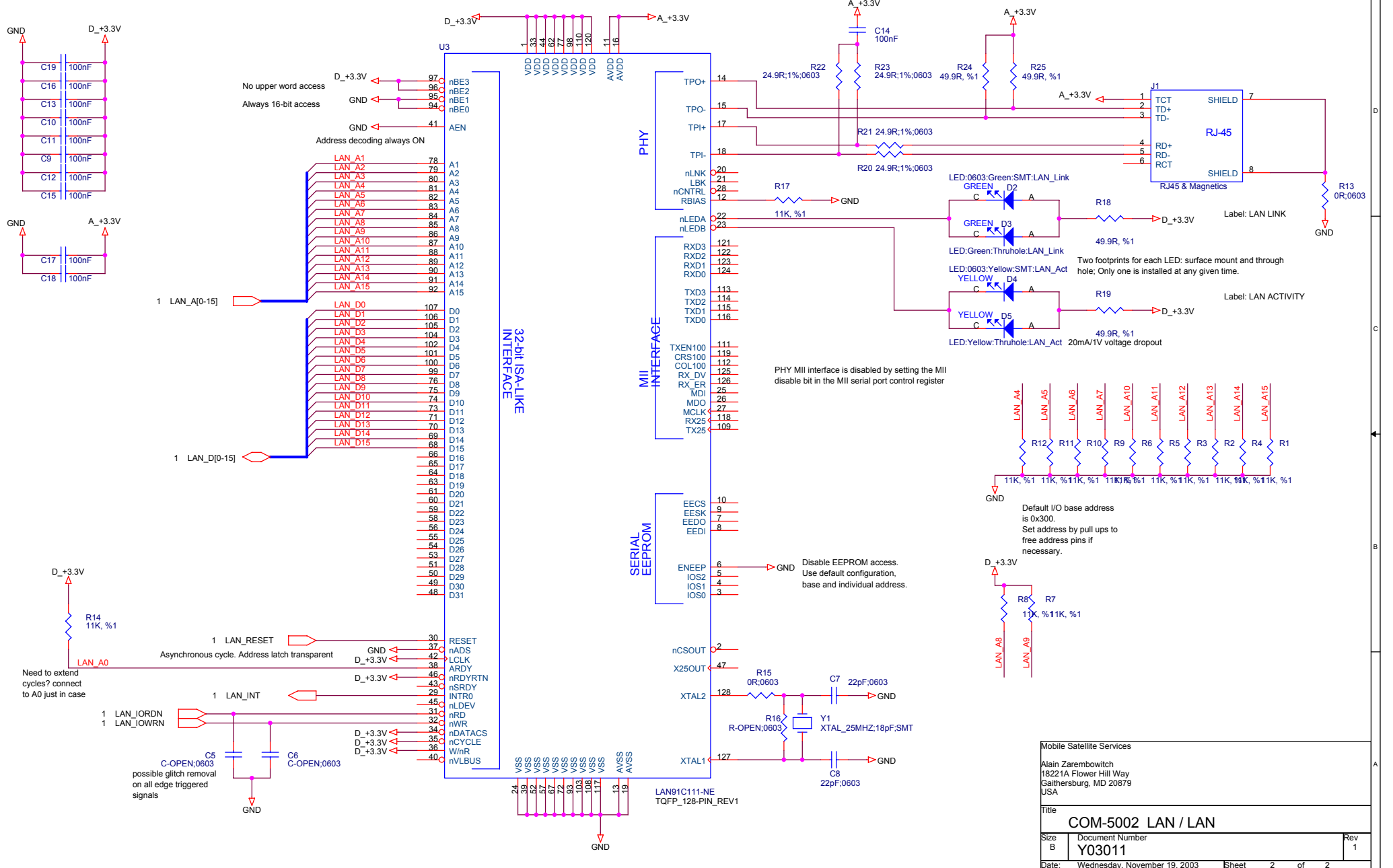


Watch out for footprint, ask Mike
Watch out for inversion A1-B20

40 Pin OUTPUT



Mobile Satellite Services			
Alain Zarembowitch 18221A Flower Hill Way Gaithersburg, MD 20879 USA			
Title COM-5002 LAN / MAIN			
Size B	Document Number Y03011	Rev 1	
Date: Wednesday, November 19, 2003	Sheet 1	of 2	



Mobile Satellite Services		
Alain Zarembowitch 18221A Flower Hill Way Gaithersburg, MD 20879 USA		
Title COM-5002 LAN / LAN		
Size B	Document Number Y03011	Rev 1
Date: Wednesday, November 19, 2003	Sheet 2	of 2